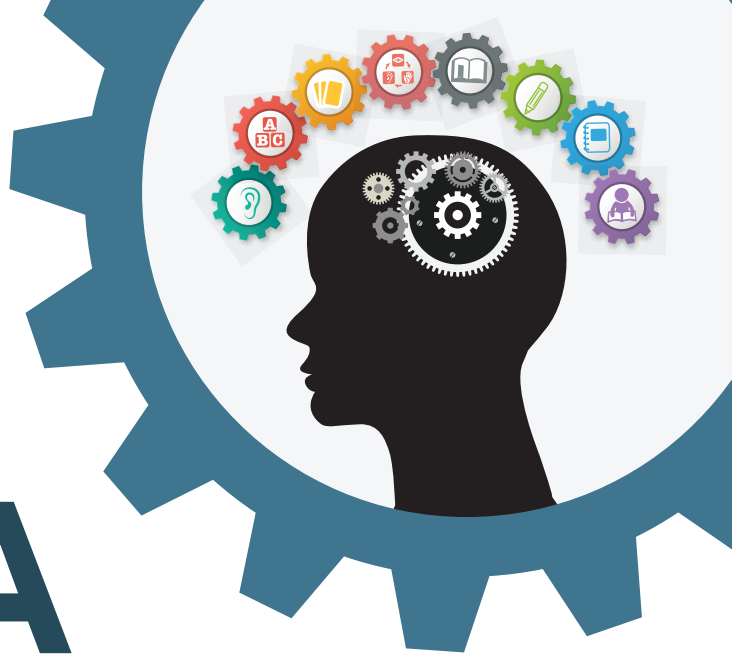


READING BY DESIGN® DYSLEXIA



What Is Dyslexia?

Dyslexia is a specific learning disability that is neurological in origin. It is characterized by difficulties with accurate and/or fluent word recognition and by poor spelling and decoding abilities. These difficulties typically result from a deficit in the phonological component of language that is often unexpected in relation to other cognitive abilities and the provision of effective classroom instruction. Secondary consequences may include problems in reading comprehension and reduced reading experience that can impede growth of vocabulary and background knowledge.

(International Dyslexia Association, 2002)



To learn more about dyslexia and other related disorders, scan the QR code.

For more information on Special Education in Texas, visit Texas SPED Support at spedsupport.tea.texas.gov/.

Reading by Design

Reading by Design: An Individualized Literacy Intervention is a systematic, multisensory approach aligned with research-based practices for developing literacy. *Reading by Design* may be used with students in kindergarten through grade 12 in a small, homogeneous group setting (teacher training required).

Included in the lessons:



Phonological Awareness



Alphabet



Review Decks



New Learning



Reading Practice



Handwriting Practice



Spelling Practice



Extended Reading Practice



Components of Language

Key Terms

Multisensory Instruction—teaching approach that engages visual, auditory, kinesthetic, and tactile senses

Alphabetic Principle—awareness that a letter or letters represent a sound in a word

Phonological Awareness—knowledge of and ability to work with sounds in spoken language

Decoding—ability to understand and apply letter and sound knowledge to read words accurately



There are 199 lessons in the 5-volume set. Each one follows a predictable lesson routine.



Each volume includes assessments so that your child's teacher can regularly check their progress and understanding of the lessons.

READING BY DESIGN Progress Report

Your child's teacher will send home a progress report each grading period.

Region 4 Education Service Center

Region 4 Education Service Center (Region 4) is one of 20 regional education service centers in Texas. Region 4 serves an eight-county area comprised of 48 public school districts and 41 open-enrollment charter schools, representing more than 1.2 million students, 165,000 educators, and 1,500 campuses.

As District Advancement Champions, our purpose is to assist educators with providing students a quality educational experience. Region 4 provides countless professional development opportunities and educational products to empower educators to embrace each student and their diverse needs.



Dyslexia

Email: dyslexia@esc4.net